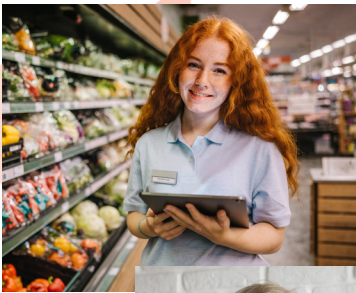


SEQUEL

Powered by the Bucks IU

Supported Employment for Students With Disabilities (ages 16-21)



SEQUEL allows the Bucks County Intermediate Unit (Bucks IU) to expand upon their over fifty years of experience providing Special Education Programs and Services to now include programs for adults with disabilities (age 21+). As an approved provider for both the Office of Developmental Programs (ODP) and Office of Vocational Rehabilitation (OVR), SEQUEL is proudly offering a Supported Employment Program to students (ages 16-21) and adults (21+) in locations throughout Bucks County.



Supported Employment for Career Exploration

Provided as an itinerant service in a variety of community settings, the student program is designed to support participants individually in obtaining and sustaining competitive, integrated employment (full or part-time work at wages comparable to those of their co-workers without disabilities).

The Program provides training the student on job assignments, periodic follow-ups, and ongoing support for both them and their employer. Additional instruction and guidance are provided as long as they are needed with the goal of fading supports as the participant gains productivity and independence, develops supportive relationships with co-workers, and begins to utilize other on-the-job resources.

Community-based work assessment

to help the participant learn about their abilities and assess if competitive integrated employment is an appropriate vocational goal.

Job maintenance for job retention

is for those currently employed within their capacities that need on-site support to learn/relearn job tasks to retain their employment.

Job development

includes activities designed to prepare the participant, employer, and the job site for a participant obtaining employment.

Job placement

provided during the first 40 hours of employment includes on-site job coaching to teach specific job tasks and acclimate the participant to the job site.

Group Employment Opportunities

Community Work Instruction (CWI) and My Work Initiative (MWI) are collaborative programs offered in partnership with OVR. Both provide wonderful group work experiences for students allowing them to see what jobs they may like, dislike, or have an affinity for, while also developing work related skills.



Program Eligibility and Questions

The Pennsylvania Office of Vocation Rehabilitation (OVR) provides employment remediation services designed to help persons with disabilities prepare for, obtain, or maintain employment. To be eligible for this program, students (ages 16-21) must have an open case with OVR. For details regarding eligibility and applying for services through OVR, please go to https://bit.ly/OVR_SupportedEmployment.

For questions regarding Bucks IU SEQUEL Programs and Services, please call 215-348-2940 extension 7061 or email SEQUEL@BucksIU.org.

Bucks County Intermediate Unit
705 N. Shady Retreat Rd.
Doylestown, PA 18901

215-348-2940
www.BucksIU.org